

Socket Cap Screws

Steel, with Low-Profile Head and Reduced Head Diameter, with Internal Hex

SPECIFICATION

Steel

Blackened BT

INFORMATION

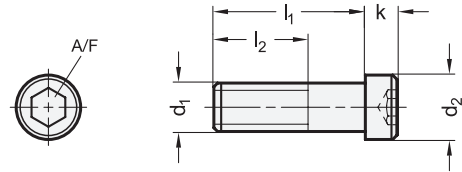
Socket cap screws GN 7984.3 have a low-profile head and a reduced head diameter compared with socket cap screws ISO 4762.

As a result, these screws can be countersunk in places where this is not possible with regular socket cap screws due to the space available, e.g. where the edge distance or countersink depth is small.

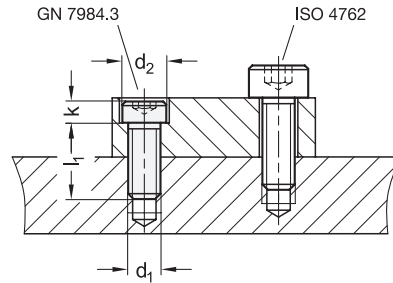
Due to their head geometry, screws according to this specification have a reduced load capacity as per ISO 898-1.

TECHNICAL INFORMATION

- Strength Values of Screws (see page A20)



Assembly examples / Comparison



GN 7984.3

Description	d ₁	l ₁ without shaft	l ₁ with shaft	l ₂	d ₂ ±0.1	k	A/F	Max. tightening torque in Nm	
GN 7984.3-M3-6-BT	M 3	6	-	-	4.5	2	2	1.4	1
GN 7984.3-M3-8-BT	M 3	8	-	-	4.5	2	2	1.4	2
GN 7984.3-M3-10-BT	M 3	10	-	-	4.5	2	2	1.4	3
GN 7984.3-M3-12-BT	M 3	12	-	-	4.5	2	2	1.4	4
GN 7984.3-M4-6-BT	M 4	6	-	-	5.5	2.8	2.5	3.4	1
GN 7984.3-M4-8-BT	M 4	8	-	-	5.5	2.8	2.5	3.4	2
GN 7984.3-M4-10-BT	M 4	10	-	-	5.5	2.8	2.5	3.4	3
GN 7984.3-M4-12-BT	M 4	12	-	-	5.5	2.8	2.5	3.4	4
GN 7984.3-M4-16-BT	M 4	16	-	-	5.5	2.8	2.5	3.4	5
GN 7984.3-M4-20-BT	M 4	20	-	-	5.5	2.8	2.5	3.4	6
GN 7984.3-M4-25-BT	M 4	25	-	-	5.5	2.8	2.5	3.4	7
GN 7984.3-M5-8-BT	M 5	8	-	-	7	3	3	6	2
GN 7984.3-M5-10-BT	M 5	10	-	-	7	3	3	6	3
GN 7984.3-M5-12-BT	M 5	12	-	-	7	3	3	6	4
GN 7984.3-M5-16-BT	M 5	16	-	-	7	3	3	6	5
GN 7984.3-M5-20-BT	M 5	20	-	-	7	3	3	6	6
GN 7984.3-M5-25-BT	M 5	25	-	-	7	3	3	6	7
GN 7984.3-M6-8-BT	M 6	8	-	-	8.5	3.5	4	10	2
GN 7984.3-M6-10-BT	M 6	10	-	-	8.5	3.5	4	10	3
GN 7984.3-M6-12-BT	M 6	12	-	-	8.5	3.5	4	10	4
GN 7984.3-M6-16-BT	M 6	16	-	-	8.5	3.5	4	10	5
GN 7984.3-M6-20-BT	M 6	20	-	-	8.5	3.5	4	10	6
GN 7984.3-M6-25-BT	M 6	25	-	-	8.5	3.5	4	10	7
GN 7984.3-M6-30-BT	M 6	-	30	18	8.5	3.5	4	10	8

Description	d ₁	l ₁ without shaft	l ₁ with shaft	l ₂	d ₂ ±0.1	k	A/F	Max. tightening torque in Nm	
GN 7984.3-M8-10-BT	M 8	10	-	-	11	4.5	5	27	6
GN 7984.3-M8-12-BT	M 8	12	-	-	11	4.5	5	27	7
GN 7984.3-M8-16-BT	M 8	16	-	-	11	4.5	5	27	8
GN 7984.3-M8-20-BT	M 8	20	-	-	11	4.5	5	27	9
GN 7984.3-M8-25-BT	M 8	25	-	-	11	4.5	5	27	10
GN 7984.3-M8-30-BT	M 8	30	-	-	11	4.5	5	27	12
GN 7984.3-M8-35-BT	M 8	-	35	22	11	4.5	5	27	14
GN 7984.3-M10-16-BT	M 10	16	-	-	13.5	5.5	6	46	13
GN 7984.3-M10-20-BT	M 10	20	-	-	13.5	5.5	6	46	15
GN 7984.3-M10-25-BT	M 10	25	-	-	13.5	5.5	6	46	17
GN 7984.3-M10-30-BT	M 10	30	-	-	13.5	5.5	6	46	20
GN 7984.3-M10-35-BT	M 10	35	-	-	13.5	5.5	6	46	22
GN 7984.3-M10-40-BT	M 10	40	-	-	13.5	5.5	6	46	26